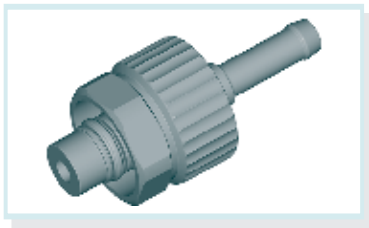


Adapter / Connections



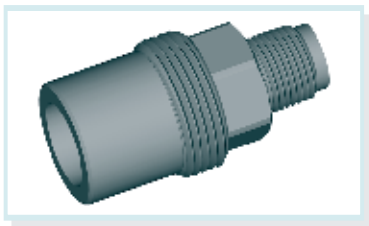
NIST nozzle 6 mm for hose connection EN
compatible to connection hose 6 mm



N₂ = **D45812-02**
CO₂ = **D45812-03**
Air = **D45812-08**
Air/O₂ = **D45812-11**

O₂ = **D45812-12**
N₂O = **D45812-13**
Vac = **D45812-39**
Xe = **D45812-46**

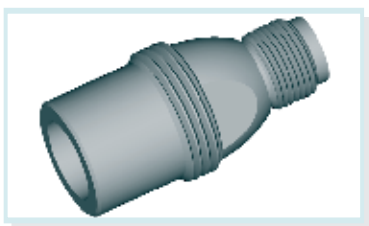
NIST with M 12x1 thread



N₂ = **D44007-02**
CO₂ = **D44007-03**
Air = **D44007-08**
Air/O₂ = **D44007-11**

O₂ = **D44007-12**
N₂O = **D44007-13**
Vac = **D44007-39**
Xe = **D44007-46**

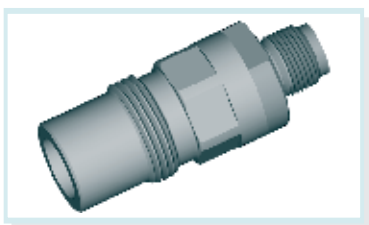
NIST with G1/4 thread



N₂ = **D44749-02**
CO₂ = **D44749-03**
Air = **D44749-08**
Air/O₂ = **D44749-11**

O₂ = **D44749-12**
N₂O = **D44749-13**
Vac = **D44749-39**
Xe = **D44749-46**

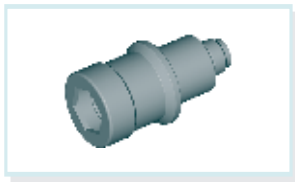
NIST with G1/4 thread
self-closing



N₂ = **D45579-02**
CO₂ = **D45579-03**
Air = **D45579-08**
Air/O₂ = **D45579-11**

O₂ = **D45579-12**
N₂O = **D45579-13**
Vac = **D45579-39**
Xe = **D45579-46**

Coupling DIN with G1/4 thread



N₂ = D44737-02
 CO₂ = D44737-03
 Air = D44737-08
 Air/O₂ = D44737-11

O₂ = D44737-12
 N₂O = D44737-13
 Vac = D44737-39
 Xe = D44737-46

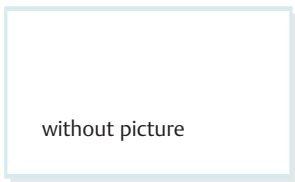
Coupling BS with G1/4 thread



N₂ = D45580-02
 CO₂ = D45580-03
 Air = D45580-08
 Air/O₂ = D45580-11

O₂ = D45580-12
 N₂O = D45580-13
 Vac = D45580-39
 Xe = D45580-46

Coupling NF with G1/4 thread

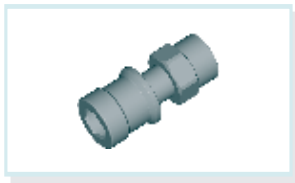


N₂ = D45650-02
 CO₂ = D45650-03
 Air = D45650-08
 Air/O₂ = D45650-11

O₂ = D45650-12
 N₂O = D45650-13
 Vac = D45650-39
 Xe = D45650-46

Further coupling according to international standards on request

Adapter NIST EN / DIN



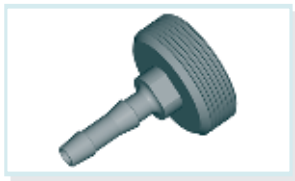
CO₂ = D44747-03
 Air = D44747-08
 O₂ = D44747-12
 N₂O = D44747-13
 Vac = D44747-39

Adapter M 34 x 1,5 to 9/16-18 UNF



O₂ = D45236

Adapter M 34 x 1,5 to 6 mm nozzle



O₂ = D45220

Adapter M 32 x 1,5 to 5 mm nozzle



Air = D45256

Y-switch DIN



Air = D45705-08
 O₂ = D45705-12