

**Connecting hose 6 mm**  
(black/neutral)



- CO<sub>2</sub> = H00071-03
- Air = H00071-08
- Air/O<sub>2</sub> = H00071-11
- O<sub>2</sub> = H00071-12
- N<sub>2</sub>O = H00071-13
- Vac = H00071-39

**Connecting hose 6 mm**  
(ISO)



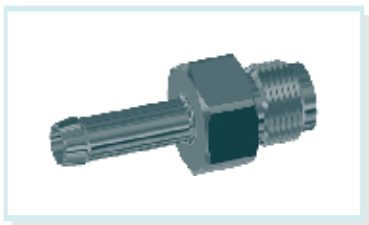
- CO<sub>2</sub> = H00071-03-ISO (grey)
- Air = H00071-08-ISO (black/white)
- Air/O<sub>2</sub> = H00071-11-ISO (white/black)
- O<sub>2</sub> = H00071-12-ISO (white)
- N<sub>2</sub>O = H00071-13-ISO (blue)
- Vac = H00071-39-ISO (yellow)

**Compression sleeve for 6 mm hose**



D45625

**Hose connection gland G1/4 - 6 mm**



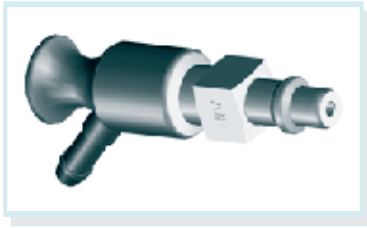
- CO<sub>2</sub> = D44809-03
- Air = D44809-08
- Air/O<sub>2</sub> = D44809-11
- O<sub>2</sub> = D44809-12
- N<sub>2</sub>O = D44809-13
- Vac = D44809-39
- Xe = D44809-46



**Attention:**

Who produces low pressure tube line systems is a manufacturer according to the MPG or the guideline 93/42/EEC.

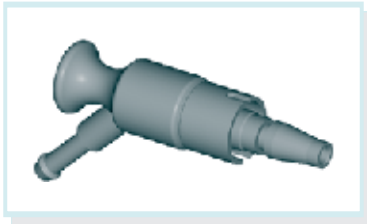
### Angle plug DIN 13260 II with gland ø 6 mm



neutral gasmarking  
CO<sub>2</sub> = **D45686-03**  
Air = **D45686-08**  
Air/O<sub>2</sub> = **D45686-08A**  
O<sub>2</sub> = **D45686-12**  
N<sub>2</sub>O = **D45686-13**  
Vac = **D45686-39**  
Xe = **D45686-46**

gasmarking acc. to ISO 32  
CO<sub>2</sub> = **D45686-03-ISO**  
Air = **D45686-08-ISO**  
Air/O<sub>2</sub> = **D45686-08A-ISO**  
O<sub>2</sub> = **D45686-12-ISO**  
N<sub>2</sub>O = **D45686-13-ISO**  
Vac = **D45686-39-ISO**  
Xe = **D45686-46-ISO**

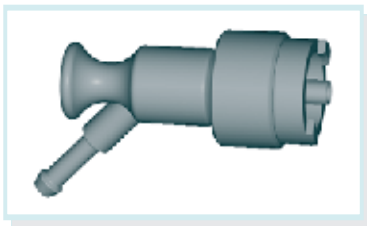
### Angle plug BS 5682 with gland ø 6 mm



neutral gasmarking  
CO<sub>2</sub> = **D45687-03**  
Air = **D45687-08**  
O<sub>2</sub> = **D45687-12**  
N<sub>2</sub>O = **D45687-13**  
Vac = **D45687-39**  
Xe = **D45687-46**

gasmarking acc. to ISO 32  
CO<sub>2</sub> = **D45687-03-ISO**  
Air = **D45687-08-ISO**  
O<sub>2</sub> = **D45687-12-ISO**  
N<sub>2</sub>O = **D45687-13-ISO**  
Vac = **D45687-39-ISO**  
Xe = **D45687-46-ISO**

### Angle plug NF with gland ø 6 mm

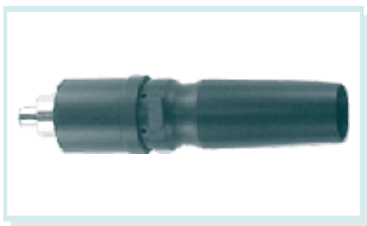


neutral gasmarking  
CO<sub>2</sub> = **D45688-03**  
Air = **D45688-08**  
O<sub>2</sub> = **D45688-12**  
N<sub>2</sub>O = **D45688-13**  
Vac = **D45688-39**  
Xe = **D45688-46**

gasmarking acc. to ISO 32  
CO<sub>2</sub> = **D45688-03-ISO**  
Air = **D45688-08-ISO**  
O<sub>2</sub> = **D45688-12-ISO**  
N<sub>2</sub>O = **D45688-13-ISO**  
Vac = **D45688-39-ISO**  
Xe = **D45688-46-ISO**

Further angle plugs e.g. AGA available

### Air-Motor connector, 23 mm gland



Air-Motor  
Air (Synthes) = **D45689-70**  
Air (Dräger/Aeskulap) = **D45689-71**