

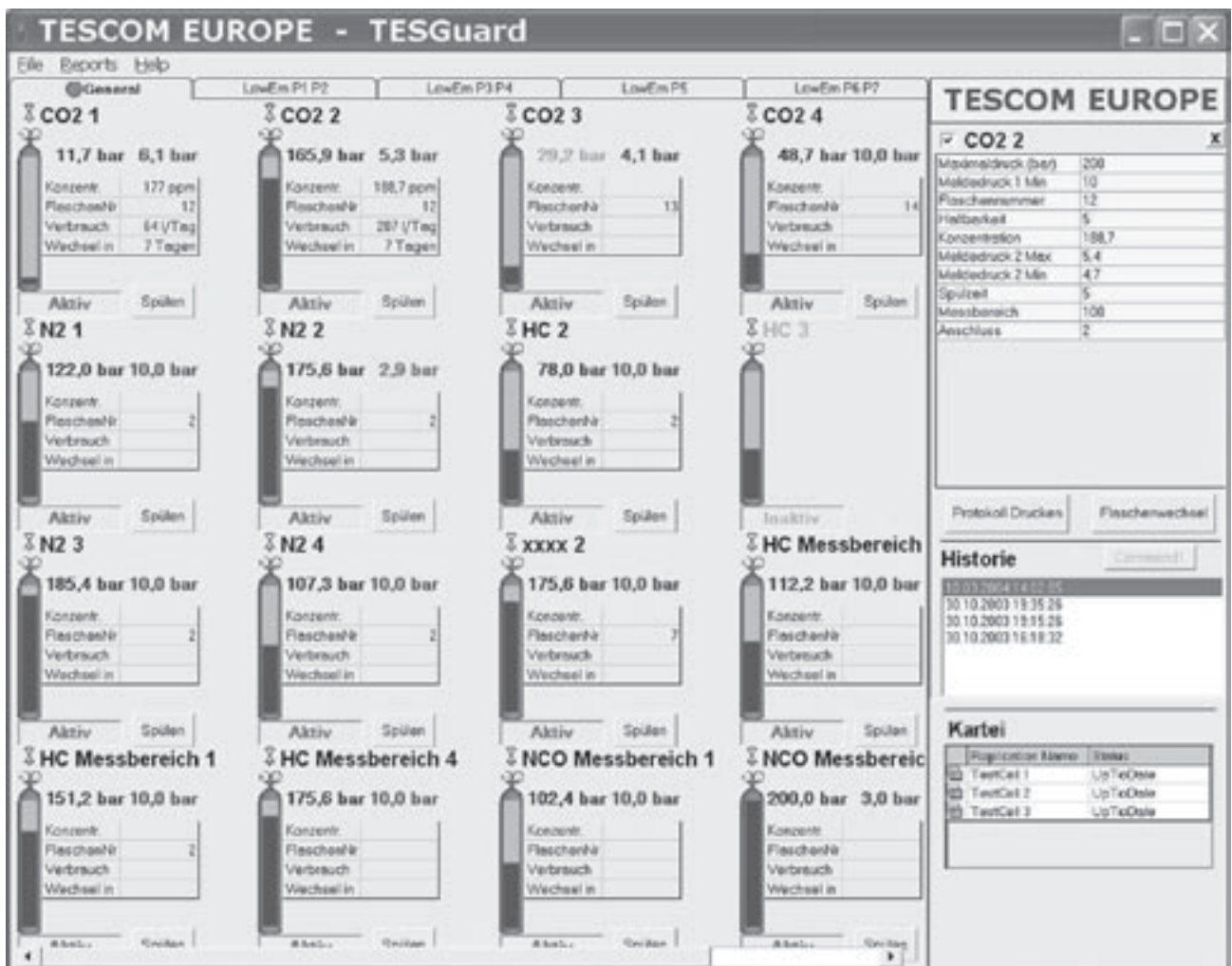
Central Gas Supply Systems
for non corrosive and corrosive gases
and gas mixtures up to purity 6.0

Gas Management System TESGuard

LAB
line

Specification

Gas management systems are used to centrally monitor gas supply installations in laboratories and industrial plants. They ensure a reliable and continuous control. The earlier a leakage can be detected, the quicker counter-measures can be activated. Tescom Europe's **TESGuard** gas management system monitors and records all relevant parameters within the gas supply system (bottle pressure, gas consumption, leak rate of the downstream point-of-use components, etc.) **TESGuard** reacts without delay in the event that any pre-set limits will be exceeded.



TESGuard's safety features

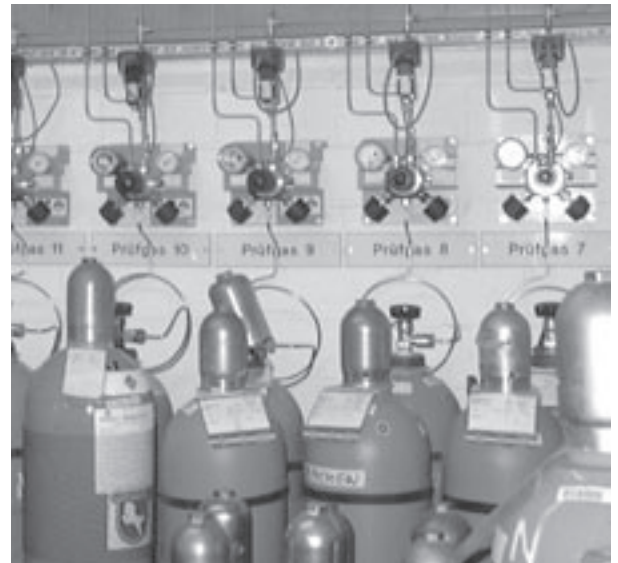
- Monitoring of inlet & outlet pressure
- Control of pipe burst/damage
- Control of pressure rise while system is active
- Control of leakage while system is shut-down
- Gas shortage alarm included via email, fax or sms-messaging
- Control of sensor signals on plausibility and to detect wire break

TESGuard's administrative features

- Concise visual presentation of each cylinder depot and each cylinder
- Individual setting of relevant cylinder attributes
- Calculation of average gas consumption and cylinder exchange dates
- Data recording and filesaving for each cylinder
- Filesaving of pressure and consumption over time

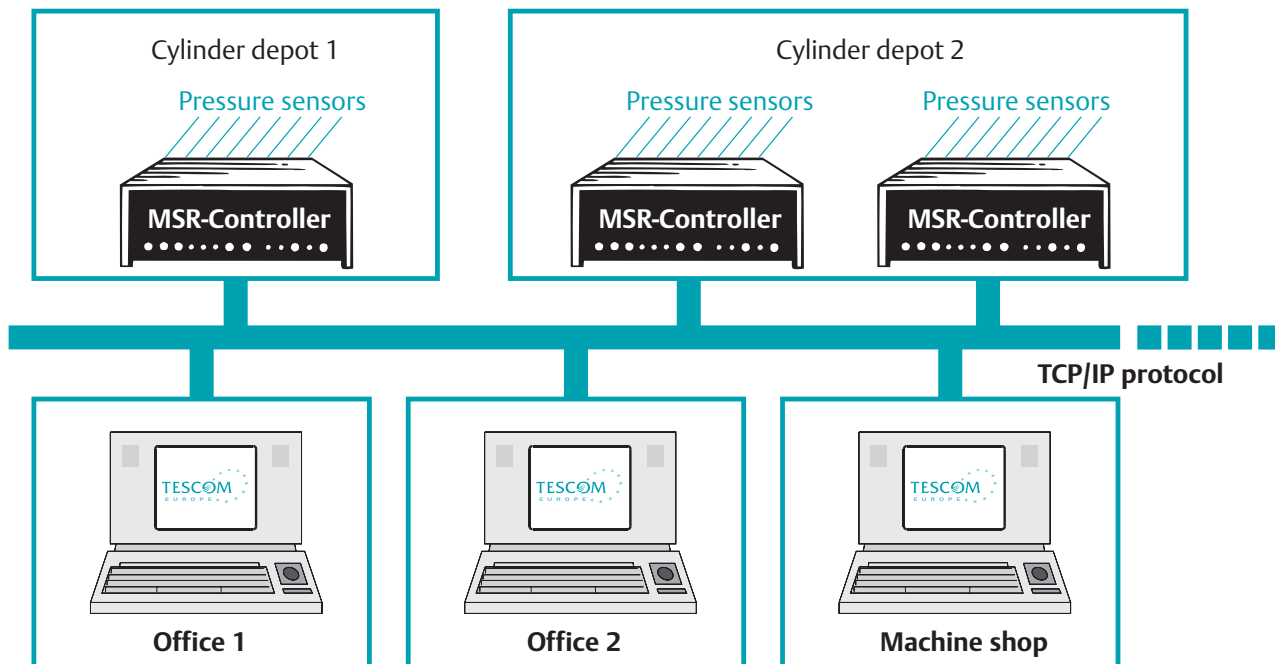
TESGuard's control features

- Activation and deactivation of individual gas cylinders / containers
- Emergency switch-off of central gas supply system or subsystems
- Triggering of pipe purging



Sample configuration for TESGuard Gas Management System

TESGuard deploys various pressure sensors to securely monitor and control the central gas supply system. Data acquisition of the pressure sensors by control unit with an integrated microprocessor. TESGuard is an intelligent stand-alone unit, independent from the surrounding hardware or software. The control unit is linked with TESGuard computers via a TCP/IP network. One or more control units can be installed for each cylinder depot. The control unit's microprocessor is equipped with up to 96 analog input units (AINs). On request analog output units (AOUTs) as well as digital in or output units (DINs/DOUTs) can be used, e.g. to actuate a system emergency shut-down at a specific pressure, to trigger an alarm signal or to open or close safety valves.



TESCOM EUROPE GMBH & CO. KG

An der Trave 23-25 • D-23923 Selmsdorf • Germany
 Tel: +49 (0) 3 88 23 / 31-0 • Fax: +49 (0) 3 88 23 / 31-199
 info@tescom-europe.com • www.tescom-europe.com

TESCOM EUROPE is a business unit of the Regulator Division. Trademarks are property of divisions of Emerson Process Management.
 12132-11-05 Subject to technical changes

